

Optec offers top-of-the-line fiber optic pigtails in a variety of configurations for end-to-end fiber connections. All pigtails are fully customizable with all connector options including FC, SC, ST, LC, MU and E2000, either to terminating with 900µm buffered cable or any customer specified cable type include simplex, duplex, as well as multi-core jacketed ribbon or distribution cables.

Available in individual packed pigtail and code-coded 6 / 8 / 12pcs per pack, Optec's pigtail set is one of the most convenient solution for using in optical networks for on-site fusion splice terminations. It offers a high flexibility to satisfy customers' need in customized length and fiber mode in different configurations.

Every piece of products are made to comply Telcordia GR-326-CORE, tested with traceable test data to assure excellent optical performance.

## Features and Applications

### Fully customizable fiber optic assemblies

Suitable for different installation requirements and be applicable for all kinds of fiber optical networks

### 100% factory tested assemblies with traceable test data

Made to comply Telcordia GR-326-CORE

### Superior optical performance

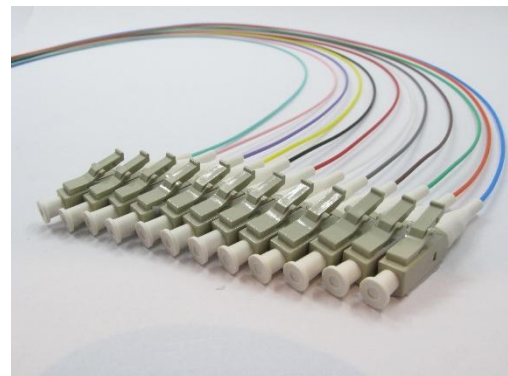
Low insertion loss and return loss to improve link loss budget during on-site installation

### Offer high flexibility to satisfy different customer needs

Available in FC, SC, ST, LC, MU & E2000 terminating with different fiber mode and cable structures

### Variety of cable options

Can terminated with simplex buffered cable, duplex zipcord, as well as multi-core jacketed ribbon or distribution cables



*12-color pigtails set*

## Specifications

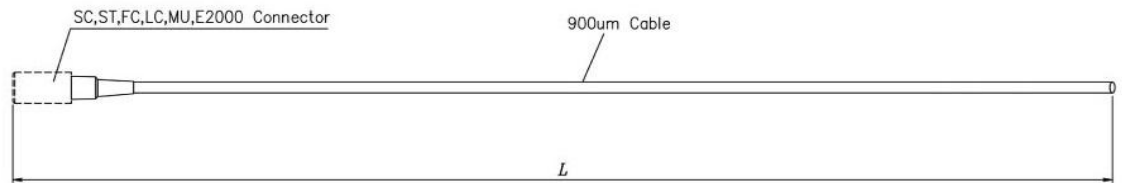
### Generic Connector Termination

Optical Performance **			
Type	Singlemode		Multimode
	UPC	APC	PC
Maximum Insertion Loss	≤ 0.3 dB	≤ 0.3 dB	≤ 0.3 dB
Typical Insertion Loss	0.2 dB	0.2 dB	0.2 dB
Return Loss	≥ 55 dB	≥ 65 dB	≥ 25 dB
Operating Temperature	-40°C to 80°C		-40°C to 80°C
Test Wavelength	1310nm		850nm
Geometric performance			
Manufactured to comply Telcordia standard GR-326-CORE			

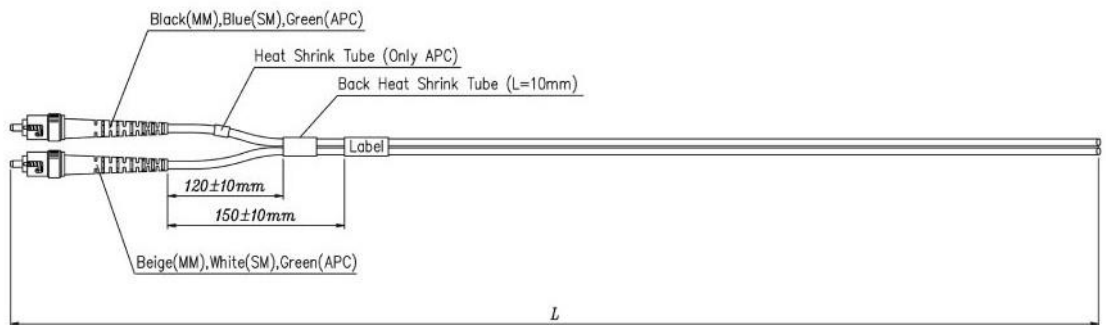
\*\* Optec works with customer to provide highly customized products with different specifications & required optical performance in a flexible pricing scheme. The above optical performance is one of our product tier only, please contact our sales for more details.

## Assembly Structure Illustration

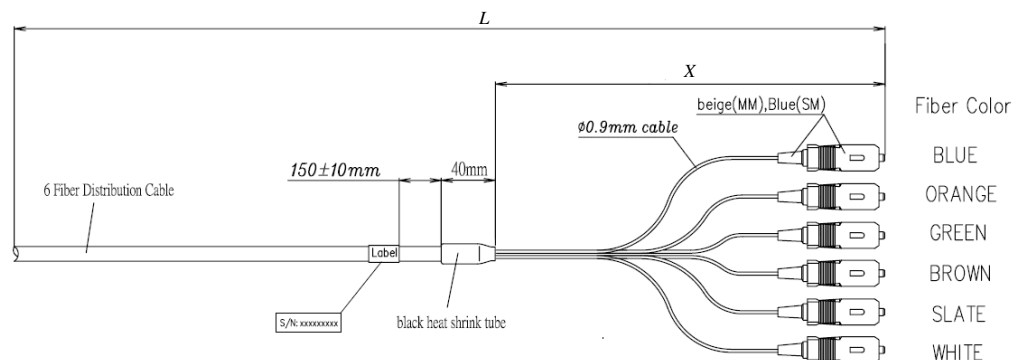
### Simplex Pigtail:



### Duplex Pigtail:



### Multi-core Pigtail:



### Optec Technology Limited.

Unit 1701, 17/F., North Tower, World Finance Centre, 19 Canton Road, Kowloon, Hong Kong.  
Tel: +852-2301-8148 | www.optec.com.hk | sales@optec.com.hk