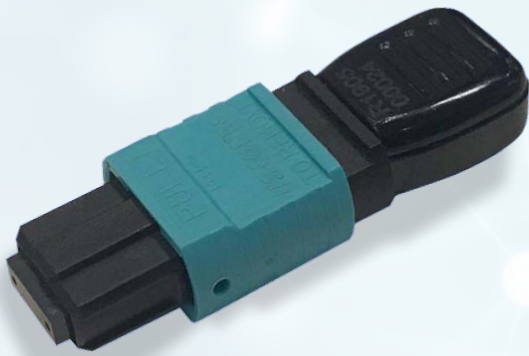




Multi-Fiber Engineering Excellence

# MTP<sup>®</sup> MINI LOOPBACK



Optec's latest MTP<sup>®</sup> Mini Loopback provides a fast and efficient solution to test the performance of transmitting and receiving sensitivity of the optical network device. With a length of only 37mm, the compact appearance of the Loopback can greatly optimise the wiring space. For compressive strength, the newly designed protection box has been greatly enhanced, and the housing has been effectively protected from easy damages. The quick connector removal tool will also be released soon.

## Optec Technology Limited

Suite 1701, 17/F., North Tower, World Finance Centre, Harbour City,  
19 Canton Road, Kowloon, Hong Kong.

Tel: +852-2301-8148 | sales@optec.com.hk

[www.optectechnology.com](http://www.optectechnology.com)

## APPLICATIONS

- Optical network equipment self-test
- Optical fiber integrated wiring
- System loop testing
- Optical fiber loop testing
- Network diagnosis and testing
- Storage LAN application

## FEATURES

Conform to Telcordia GR-1435-CORE and RoHS 2.0

### Connector type:

MTP

### Fiber modes:

Single-mode/Multi-mode

### Optical fiber type:

SM or MM , specific fiber optional

### Fiber count type:

MTP (8F, 12F, 16F, 24F)

### Options:

Elite (low loss); Standard

### Male and female structures

### Link loss:

SM low loss Link Loss  $\leq 0.5\text{dB}$

SM standard Link Loss  $\leq 1.0\text{dB}$

MM low loss Link Loss  $\leq 0.4\text{dB}$

MM standard Link Loss  $\leq 0.8\text{dB}$

### Return loss:

SM APC  $>60\text{dB}$ ; MMPC  $\geq 25\text{dB}$

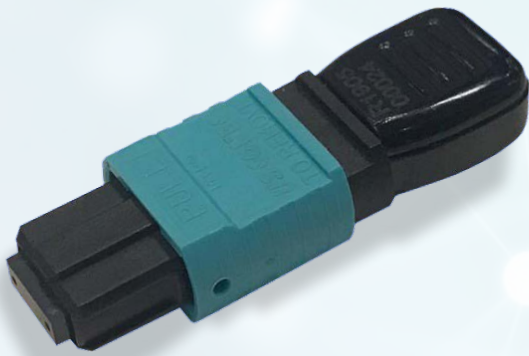
### Product dimension:

37mm (L) x 11mm (W) x 6.8mm (H)



Multi-Fiber Engineering Excellence

# MTP<sup>®</sup> MINI 回路器



Optec 最新的 MTP<sup>®</sup> Mini 回路器提供了一种快捷高效的解决方案，以测试光网络设备的传输能力和接收灵敏度。这款回路器长度只有 37mm，迷你的外形能够使布线空间得到很大的优化。在抗压强度上，新设计的保护盒增强很多，并有效的改善了外壳容易破损的现象。同步也将推出快捷的连接头取出工具。

## 应用场景

- 光网络设备自检测试
- 光纤综合布线
- 系统回路测试
- 光缆回路检测
- 网路诊断与测试
- 存储局域网应用

## 特点

符合 Telcordia GR-1435-CORE 及 RoHS 2.0 要求

### 连接头类型可选：

MTP

### 光纤模式：

单模/多模

### 光纤类型：

SM 或 MM、特定光纤可选

### 插芯种类：

MTP (8F, 12F, 16F, 24F)

### 低损耗、普通损耗可选

### 公与母结构

### 插入损耗：

SM low loss Link Loss  $\leq 0.5\text{dB}$

SM standard Link Loss  $\leq 1.0\text{dB}$

MM low loss Link Loss  $\leq 0.4\text{dB}$

MM standard Link Loss  $\leq 0.8\text{dB}$

### 回波损耗：

SM APC  $>60\text{dB}$ ; MMPC  $\geq 25\text{dB}$

### 产品尺寸：

长 37mm 宽 11mm 高 6.8mm

爱普迪光通讯科技有限公司

九龙尖沙咀广东道19号海港城

环球金融中心北座17楼1701室

电话：+852-2301-8148 | sales@optec.com.hk

www.optectechnology.com/ch